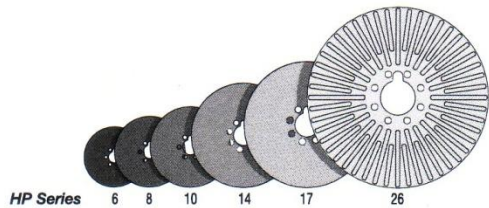


- Compact*
- Modular design*
- Interchangeable parts*
- High thermal capacity*
- High torque range & capacity*



Montalvo Brakes

HP-Series High Performance Dual Disc Brakes

HP-Series is the standard for tension control brakes in converting applications worldwide. It offers high thermal capacity coupled with “tissue to board” sensitivity. Montalvo’s original development of the dual disc, multiple-range air cooled brake virtually eliminated the need for water cooling and effectively put an end to traditional “piggy-back” products. The HP-Series has been extremely successful and has taken Montalvo’s design a step further. The major design criteria in the development of the HP-Series was that each size in the series should have the capacity of the next larger size in the Standard Series. Montalvo met and exceeded its goal with the HP Series - the standard for tension control brakes in the converting industry.

HP Brakes *without Adapters* (HP 1004* shown)

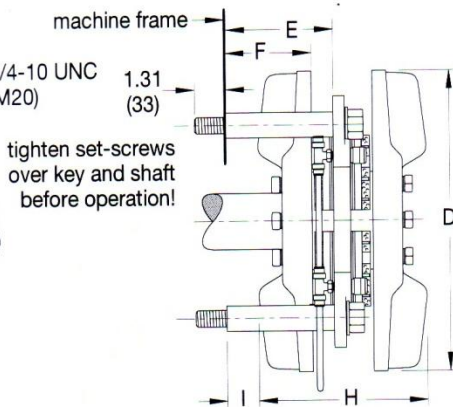
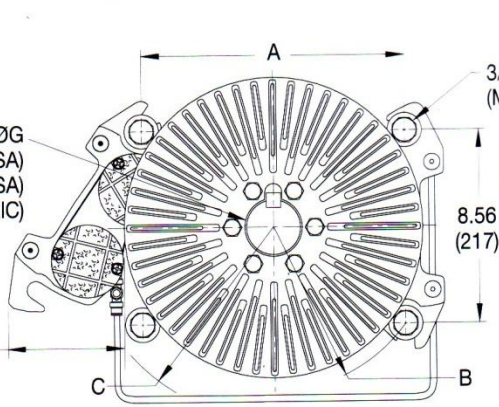
HP 601-604

HP 801-804

HP 1001-1004

ØG
bore LC4 fit to suit (USA)
keyway class 1 fit (USA)
DIN 6885, part 3 (METRIC)

5.00 (127)
min. clearance
to change pads



Size	A	B	C	D	E	F	G(max.)	G(min.)	H	I	Shaft Length (min.)
HP 6	7.92 (201)	5.86r (149)	7.50r (191)	10.00 (254)	5.00 (127)	4.07 (103)	1-3/4 (45)	1-1/4 (35)	6.52 (166)	2.11 (54)	6.80 (173)
HP 8	10.00 (254)	6.58r (167)	8.50r (216)	11.75 (298)	6.00 (152)	5.07 (129)	2 (50)	1-1/4 (35)	7.20 (183)	2.77 (70)	7.80 (198)
HP 10	11.83 (300)	7.30r (185)	9.00r (229)	13.38 (340)	7.00 (178)	6.06 (154)	2-1/2 (65)	1-1/2 (40)	7.36 (187)	3.68 (93)	8.80 (224)

* Illustration of brake mounted without using adapters. Does not represent appearance of all HP brakes. Appearance and dimensions vary.

HP Series Brakes *with Adapters* (HP 1008 shown)**

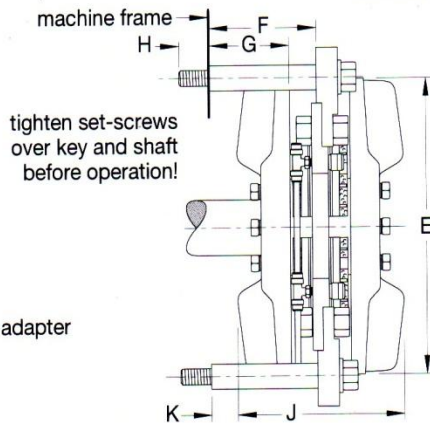
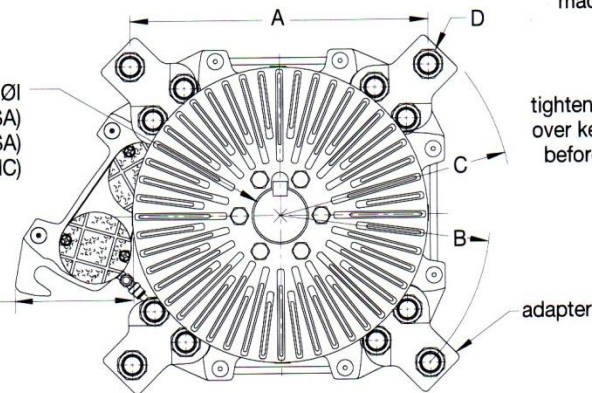
HP 805 & 806

HP 1005-1008

HP 1400 (all)

ØI
bore LC4 fit to suit (USA)
keyway class 1 fit (USA)
DIN 6885, part 3 (METRIC)

5.00 (127)
min. clearance
to change pads



dimensions in inches (mm)

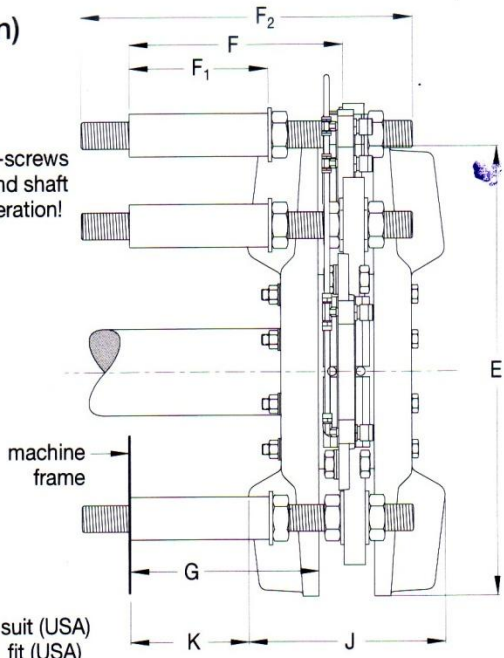
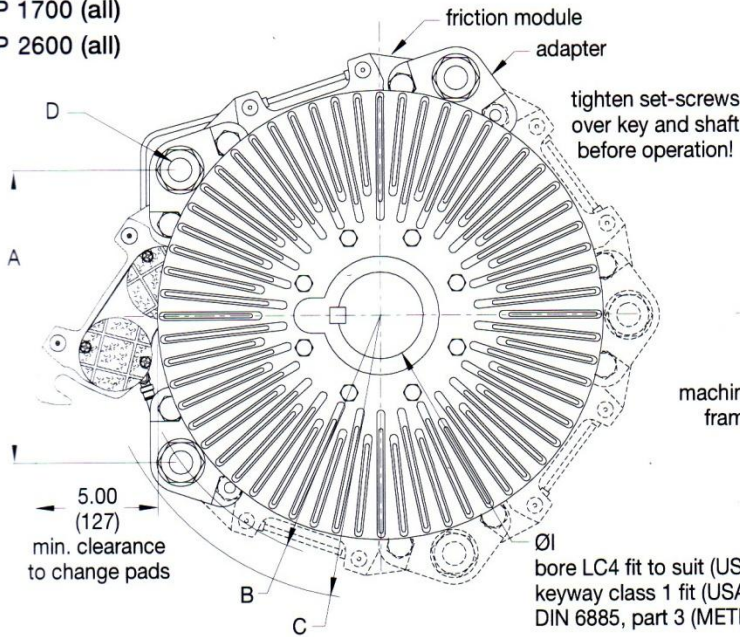
Size	A	B	C	D	E	F	G	H	I(max.)	I(min.)	J	K	# of Adapters	Degrees Apart	Shaft Length (min.)
HP 8	13.10 (333)	7.56r (192)	9.00r (229)	3/4-10 UNC (M-20)	11.75 (298)	6.00 (152)	4.82 (122)	1.30 (33)	2 (50)	1-1/4 (35)	7.20 (183)	2.52 (64)	3	120	7.55 (192)
HP 10	13.44 (341)	9.50r (241)	10.50r (267)	3/4-10 UNC (M-20)	13.38 (340)	7.00 (178)	5.82 (148)	1.30 (33)	2-1/2 (65)	1-1/2 (40)	7.36 (187)	3.44 (87)	4	90	8.55 (217)
HP 14	13.23 (336)	11.25r (286)	12.50r (318)	3/4-10 UNC (M-20)	17.25 (438)	8.40 (213)	7.22 (183)	1.30 (33)	4 (100)	2 (50)	8.10 (206)	4.47 (114)	5	72	9.95 (253)

** Illustration of brake mounted using adapters. Does not represent appearance of all HP brakes. Appearance and dimensions vary.

HP Series Brakes *with Adapters* (HP 1704** shown)

HP 1700 (all)

HP 2600 (all)

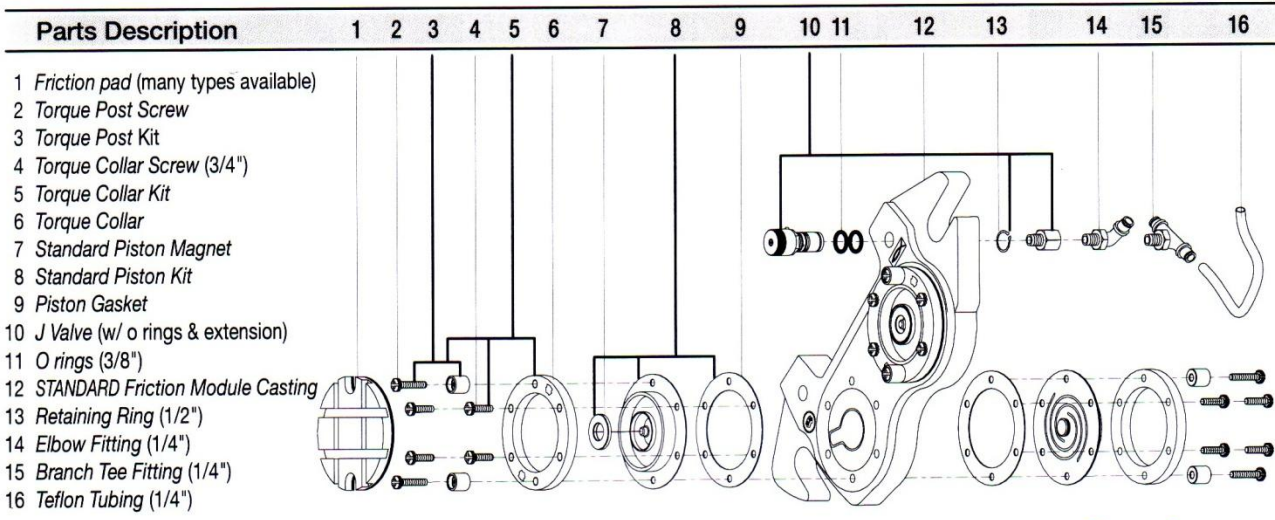
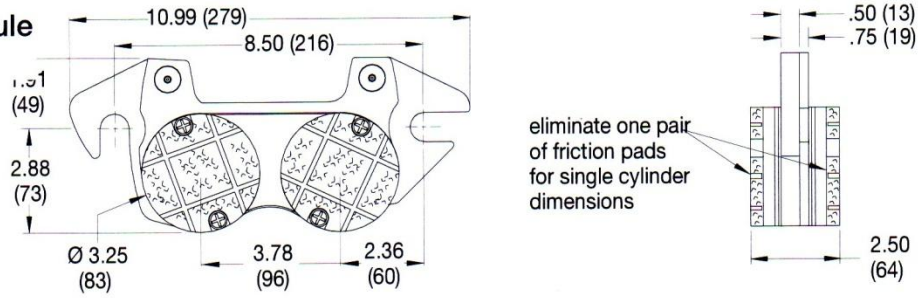


Ø1
bore LC4 fit to suit (USA)
keyway class 1 fit (USA)
DIN 6885, part 3 (METRIC)

Size	A	B	C	D	E	F	F ₁	F ₂	G	I(max.)	I(min.)	J	K	# of Adapters	Degrees Apart	Shaft Length (min.)
HP 17	13.59 (345)	11.56r (294)	13.25r (337)	11/4-7 UNC (M30)	20.88 (530)	10.00 (254)	6.50 (165)	15.50 (394)	8.82 (224)	4-1/2 (115)	2-1/2 (65)	9.18 (233)	5.53 (140)	5	72	12.48 (317)
HP 26	13.78 (350)	18.00r (457)	20.00r (508)	11/2-6 UNC (M36)	30.00 (762)	14.00 (356)	10 (254)	20 (508)	12.82 (326)	4-1/2 (115)	3-3/4 (95)	12.25 (311)	8.00 (203)	8	45	16.48 (419)

** Illustration of brake mounted using adapters. Does not represent appearance of all HP brakes. Appearance and dimensions vary.

STANDARD Friction Module (dual cylinder shown)

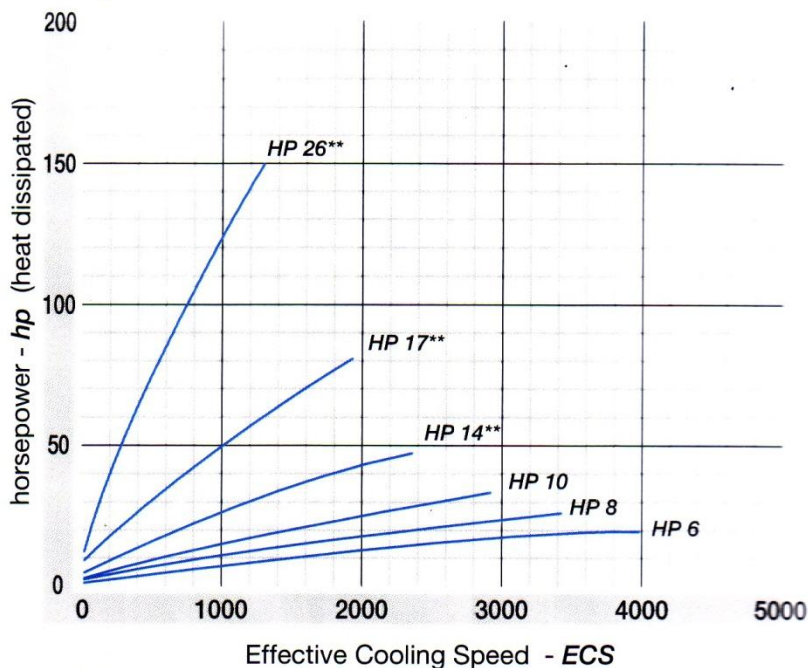


Torque

Size	Max. - Min. Torque†(in-lb)				
	Max. @ 75 psi - Min. @ 1 psi				
	0.10 Fric. Coef.	0.30 Fric. Coef.	0.45 Fric. Coef.		
HP 600					
HP601	165	500	750	2.2	60
HP602	330	1000	1500		
HP603	500	1500	2250		
HP604	660	2000	3000		
HP 800					
HP801	230	690	1035	3.0	9.2
HP802	460	1380	2070		
HP803	690	2070	3105		
HP804	920	2760	4140		
HP805	1150	3450	5175		
HP806	1380	4140	6210		
HP 1000					
HP1001	270	820	1230	3.6	10.9
HP1002	545	1640	2460		
HP1003	820	2460	3690		
HP1004	1090	3280	4920		
HP1005	1365	4100	6150		
HP1006	1640	4920	7380		
HP1007	1910	5740	8610		
HP1008	2190	6560	9840		
HP 1400					
HP1401	380	1150	1725	5.0	15.3
HP1402	765	2300	3450		
HP1403	1150	3450	5175		
HP1404	1530	4600	6900		
HP1405	1915	5750	8625		
HP1406	2300	6900	10350		
HP1407	2680	8050	12075		
HP1408	3065	9200	13800		
HP1409	3450	10350	15525		
HP1410	3830	11500	17250		
HP 1700					
HP1701	460	1390	2090	6.1	18.1
HP1702	930	2790	4180		
HP1703	1390	4180	6270		
HP1704	1860	5575	8360		
HP1705	2322	6970	10450		
HP1706	2785	8360	12545		
HP1707	3715	9755	14630		
HP1708	3715	11150	16725		
HP1709	4180	12545	18815		
HP1710	4645	13930	20905		
HP 2600					
HP2601	710	2130	3195	9.5	28.4
HP2602	1420	4260	6390		
HP2603	2130	6390	9505		
HP2604	2840	8250	12780		
HP2605	3550	10650	15975		
HP2606	4260	12780	19170		
HP2607	4970	14910	22365		
HP2608	5680	17040	25560		
HP2609	6390	19170	28755		
HP2610	7100	31300	31950		
HP2611	7810	23430	35145		
HP2612	8520	25560	38340		
HP2613	9230	27690	41535		
HP2614	9940	28820	44730		
HP2615	10650	31950	47925		
HP2616	11360	34480	51120		

† Friction coefficients are nominal. Rated torque may vary depending on operating temperature.

Horsepower



Effective Cooling Speed

The speed at which a brake will dissipate a given heat horsepower.

$$ECS = \frac{2 (\text{rpm min.}) + \text{rpm max.}}{3}$$

Testing

The brakes were mounted as recommended in the Brakes Installation Instruction Manual. No guard or cover was used. Addition of machine guarding, fan or blower cooling, differences in ambient conditions, location, mounting method, etc. will affect heat (hp) dissipation capacity of any air cooled brake. Careful consideration should be given to all conditions surrounding installation. Please consult The Montalvo Corporation for help in application sizing.

Temperature

Ambient 55 - 60°F (13 - 16°C)
 Cast Iron Bulk 350°F (177°C)
 (humidity) 65 - 70%

Note

Montalvo Brakes are called upon to operate within a wide speed range when used in converting applications. They do not carry "nominal" ratings.

Important

Application data should be supplied to Montalvo or your local Montalvo representative to insure an accurate application.

Size	Max. Speed* rpm	Inertia (Wr ²) (disc-hub) lb/ft ²	Weight (disc-hub) lb	Bal. in-oz
HP 6	4300	4.3	35	0.16
HP 8	3400	10.8	61	0.41
HP 10	2900	20.8	105	0.90
HP 14	2300	71.1	182	1.9
HP 17	1900	188	305	3.9
HP 26	1300	1070	845	2.4

* Do not use to calculate horsepower.

** Maximum Power Absorption (MPA) Rating

HP 14, 17 & 26 disc/hubs have the capacity to dissipate rated horsepower, however, excessive power absorption by the friction pads may result in higher pad wear. For optimum pad wear, do not exceed the MPA rating: MPA rating = 4.0 hp per cylinder (example: HP1403 = 3 x 4 hp = 12 hp MPA rating).